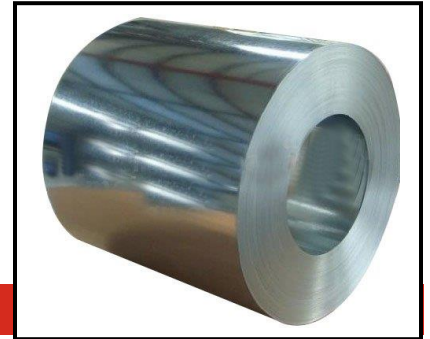


## TECHNICAL INFORMATION SHEET

# ACRYLUME® Steel Architectural Sheet & Coil

### Item Description

24 gauge



## Product Information

### Description:

Firestone UNA-CLAD™ ACRYLUME Steel Architectural Sheet & Coil is a zinc-aluminum coated steel sheet product that combines the excellent corrosion resistance of a GALVALUME® steel sheet coating with a clear organic polymer surface treatment that is applied over the GALVALUME steel sheet coating. The surface treatment is essentially invisible but it provides excellent characteristics to enhance the performance and applicability of unpainted GALVALUME steel sheet. Firestone UNA-CLAD ACRYLUME Steel Architectural Sheet & Coil is for general sheet metal use in building applications and can be utilized for fascia panels, soffits, gravel stops, copings, and roofing such as flat seam, standing seam, batten seam, and mansards.

### Method of Application:

1. Install in accordance with recognized sheet metal practices.
2. UNA-CLAD sheets can be cut, formed, and fastened using conventional hand or power tools.
3. For best results cutting tool edges should be kept sharp, clean, properly dressed, and closely aligned.
4. Fabrication and erection can be accomplished with strippable plastic film in place. Film should be removed from areas of concealed or joined pieces.

### Storage:

- Firestone metal sheet and coil should be stored in a well ventilated, dry place where no moisture can contact them. Moisture (from rain, snow, condensation, etc.) trapped between layers of material may cause water stains or white rust, which can affect the service life of the material and will detract from its appearance.
- If outdoor storage cannot be avoided, protect the sheet and coil with a ventilated canvas or waterproof paper cover. Do not use plastic, which can cause condensation. Keep the material off the ground in an inclined position with an insulator such as wood.
- Maximum 2,000 lb of sheets per pallet.

### LEED® Information:

Post Industrial Recycled Content:	36.9%
Post Consumer Recycled Content:	19.8%
Kynar 500/Hylar 5000 Paint Finish:	AAMA 621-02
Manufacturing Location:	Anoka, MN

\*NOTE: LEED® is a registered trademark of the U.S. Green Building Council.

# TECHNICAL INFORMATION SHEET

## ACRYLUME® Steel Architectural Sheet & Coil

### Precautions:

- Protective film may degrade or become brittle with exposure to direct sunlight. Therefore, it must be removed immediately.
- The performance of this material in the field depends substantially on the integrity of the zinc-aluminum coating being intact. Therefore, this UNA-CLAD product should not be used in areas of high abrasion or where it is subject to mechanical damage.
- Care must be exercised during fabrication and erection to avoid surface damage.
- Firestone recommends a minimum bend radius of 2T. Anything less than a 2T bend radius can cause crazing to the material.
- Attention should be paid to good house-keeping practices.
- Tools must be clean and properly dressed.
- Avoid dragging sheets over surfaces which may scratch or mar the finish.
- For general sheet metal use in building applications.
- Do not cut with power saws or abrasive blades.

### Typical Properties

Property	Value
Base Metal	AZ55 – Hot dipped Galvalume® (55% Aluminum and 43+% zinc) steel sheet, commercial weight, meeting ASTM A792/A792M
Minimum Yield	50 KSI
Coefficient of Thermal: Expansion Modules of Elasticity Specification	06.7 x 10 <sup>-6</sup> in/in/ °F (13.9 m/m.K x 10 <sup>-6</sup> ) 29.0 x 10 <sup>6</sup> x KSI (200 GPa) ASTM E111-04

### Product Data

Property	Value		
Finish	Clear organic polymer surface treatment		
Wash Coat	50 KSI		
Gauge:	<b>Weight</b>	<b>Slit Coil Size</b>	<b>Sheet Dimension</b>
24 ga	1.000 lb/ft <sup>2</sup> , 4.89 kg/M <sup>2</sup>	4.00" (0.1 m) - 48" (1.2 m)	48" (1.2 m) x 96" (2.4 m), 120" (3.1 m) & 144" (3.7 m)

\*Acrylume is a registered trademark of United States Steel Corporation.

\*Galvalume is a registered trademark of Bieci International Inc.

Please contact Firestone Technical Services Department at 1-800-428-4511 for further information.

*This sheet is meant to highlight Firestone products and specifications and is subject to change without notice. Firestone takes responsibility for furnishing quality materials which meet published Firestone product specifications or other technical documents, subject to normal roof manufacturing tolerances. Neither Firestone nor its representatives practice architecture. Firestone offers no opinion on and expressly disclaims any responsibility for the soundness of any structure. Firestone accepts no liability for structural failure or resultant damages. Consult a competent structural engineer prior to installation if the structural soundness or structural ability to properly support a planned installation is in question. No Firestone representative is authorized to vary this disclaimer.*